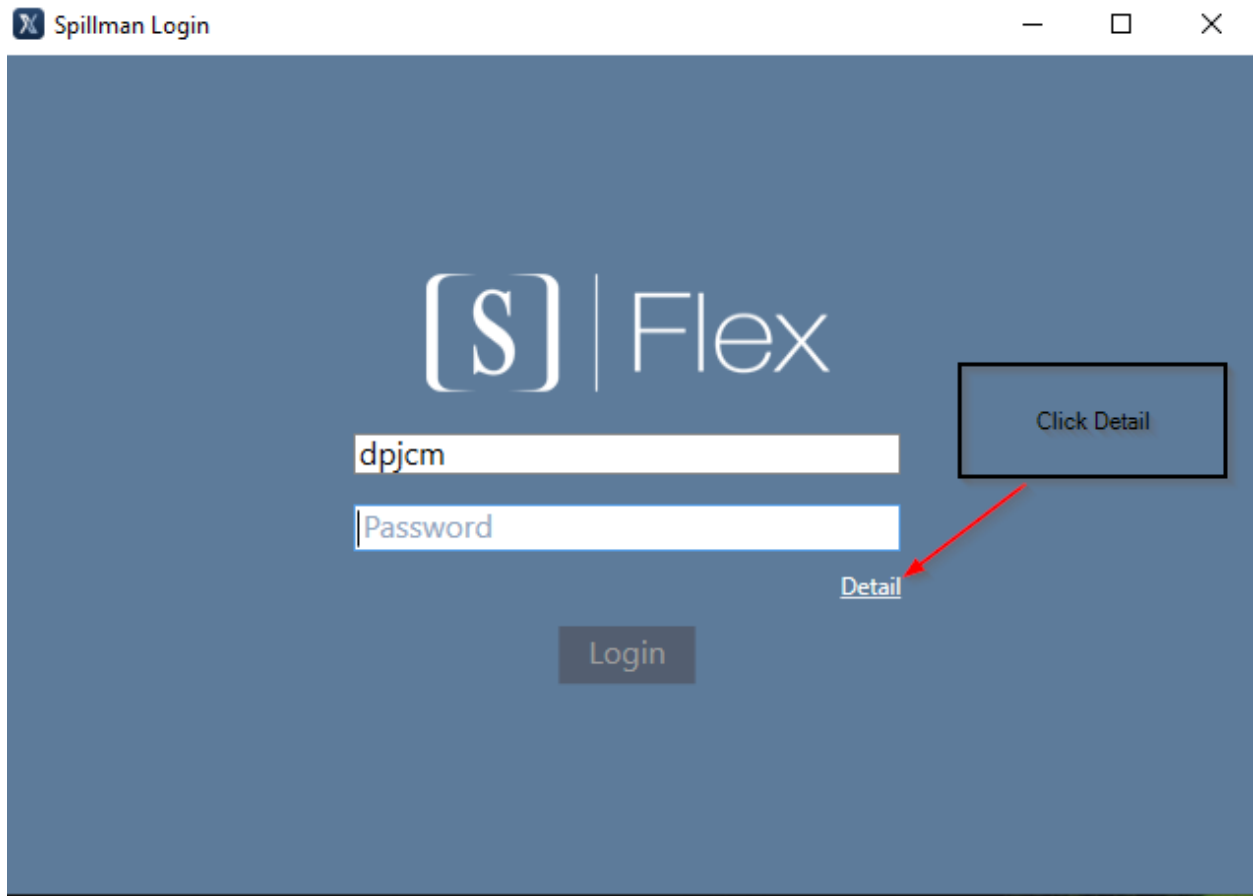


1. Click Detail



2. Click Edit Server

Spillman Login

dpjcm

Password

Production

Edit Server

Connection Protocol: ☒ Connected ☐ Mobile

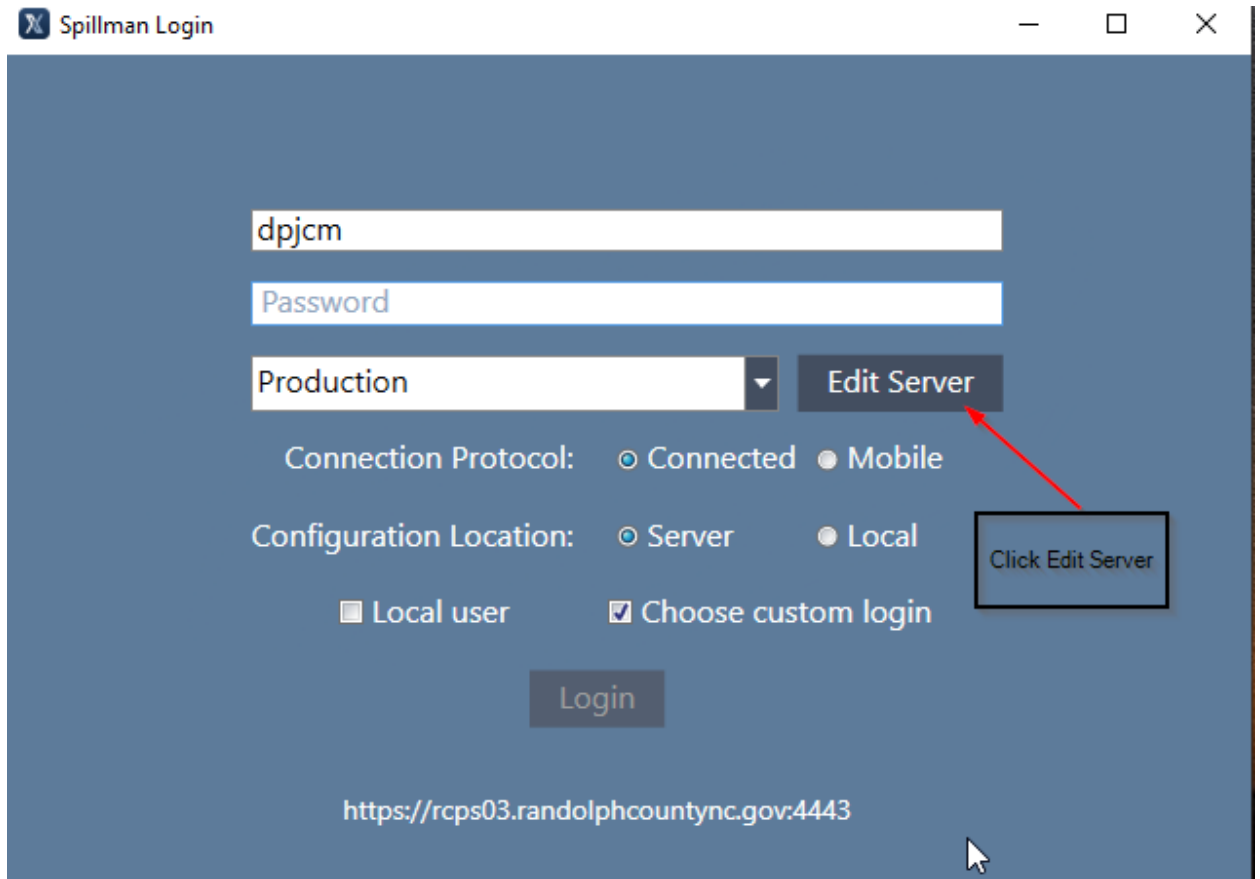
Configuration Location: ☒ Server ☐ Local

☐ Local user ☒ Choose custom login

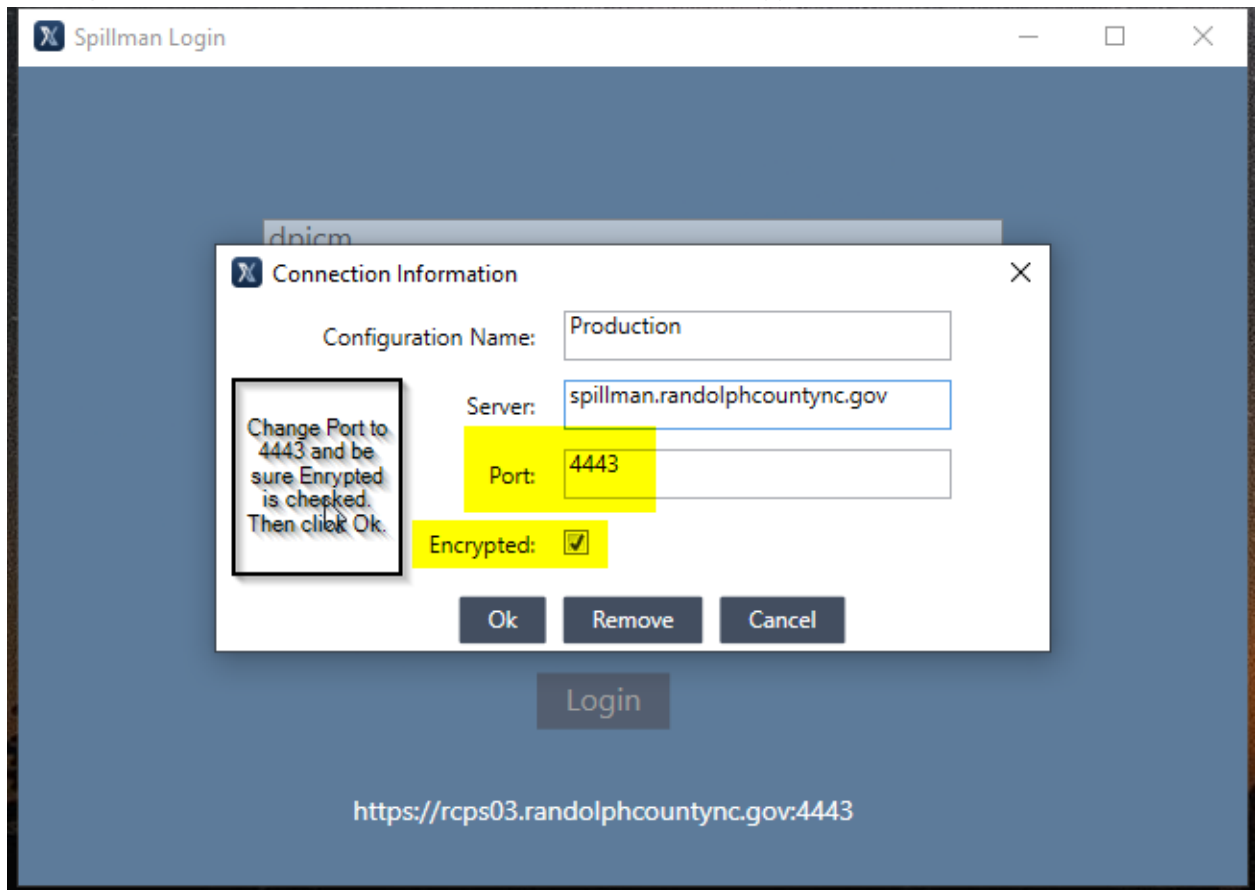
Login

<https://rcps03.randolphcountync.gov:4443>

Click Edit Server

The image is a screenshot of a web application window titled "Spillman Login". The window has a dark blue header bar with the title and standard window controls (minimize, maximize, close). The main content area is a lighter blue. It contains a login form with several fields: a username field with "dpjcm", a password field labeled "Password", and a dropdown menu currently showing "Production". To the right of the dropdown is a dark grey button labeled "Edit Server". A red arrow points from a callout box labeled "Click Edit Server" to this button. Below the dropdown are two rows of radio buttons. The first row is "Connection Protocol:" with "Connected" selected and "Mobile" unselected. The second row is "Configuration Location:" with "Server" selected and "Local" unselected. Below these are two checkboxes: "Local user" (unchecked) and "Choose custom login" (checked). At the bottom of the form is a dark grey "Login" button. At the very bottom of the window, the URL "https://rcps03.randolphcountync.gov:4443" is displayed. A mouse cursor is visible in the bottom right corner of the window.

3. Change Port: from 4480 to 4443. Ensure the Encrypted box is checked.



4. You will prompted to change your password.