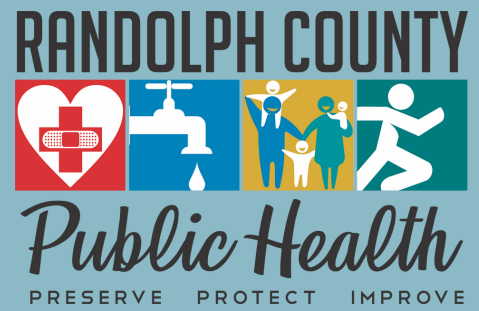


COVID-19 UPDATE



3/25/22



**Total cases
(lab confirmed + antigen)**



Reported on the NCDHHS Dashboard
<https://covid19.ncdhhs.gov/dashboard>



35,410

Weekly case count: 46
3/19-3/25

Randolph County Vaccination Status

(for those eligible who are 5 years or older)

Received first dose:
66,355 (49%)

Fully Vaccinated:
62,944 (46%)

<https://covid19.ncdhhs.gov/dashboard/vaccinations>

**Total
COVID-19
deaths***

406

**Determined by a positive lab test*

Outbreaks

There are currently **1** outbreak in congregate living setting. The outbreak is in a long-term care facility.

To view NC Outbreaks and Clusters, visit:
<https://covid19.ncdhhs.gov/dashboard/outbreaks-and-clusters>

Update

As of March 23, 2022, the NCDHHS COVID-19 Dashboard Summary Page will update weekly on Wednesdays to include some new surveillance data.

To view these changes, visit:
<https://covid19.ncdhhs.gov/dashboard>