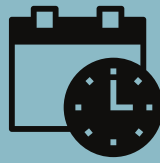
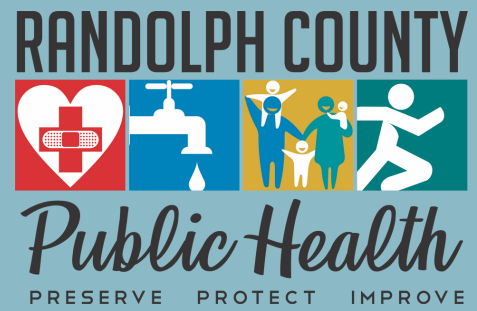


COVID-19 UPDATE



3/18/22



**Total cases
(lab confirmed + antigen)**

+ 35,364



Reported on the NCDHHS Dashboard
<https://covid19.ncdhhs.gov/dashboard>

Weekly case count: 91
3/12-3/18

**Proportion of positive
laboratory tests*
(positivity rate)**

4.5%

Visit: [NCDHHS % Positive by County](#)

**Total
COVID-19
deaths***

406

**Determined by a positive lab test*

**Randolph County
Vaccination Status**
(for those eligible who are 5 years or older)

**Received first dose:
66,307 (49%)**

**Fully Vaccinated:
62,866 (46%)**

<https://covid19.ncdhhs.gov/dashboard/vaccinations>

Outbreaks

There are currently **2** outbreaks in
congregate living settings. **1** of these
outbreaks is in a long-term care facility
and **1** in RC detention center.

To view NC Outbreaks and Clusters, visit:
<https://covid19.ncdhhs.gov/dashboard/outbreaks-and-clusters>