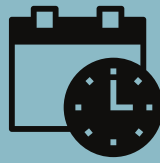
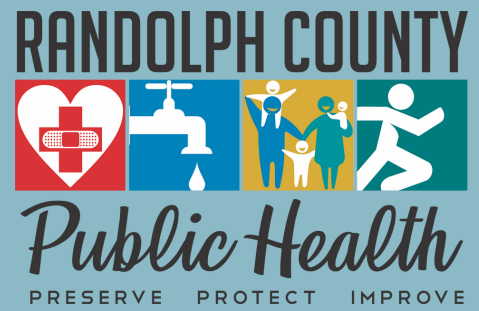


COVID-19 UPDATE



3/11/22



**Total cases
(lab confirmed + antigen)**

+ 35,273



Reported on the NCDHHS Dashboard
<https://covid19.ncdhhs.gov/dashboard>

Weekly case count: 95
3/5-3/11

**Proportion of positive
laboratory tests*
(positivity rate)**

6.2%

Visit: [NCDHHS % Positive by County](#)

**Total
COVID-19
deaths***

403

**Determined by a positive lab test*

**Randolph County
Vaccination Status**
(for those eligible who are 5 years or older)

Received first dose:
66,239 (49%)

Fully Vaccinated:
62,768 (46%)

<https://covid19.ncdhhs.gov/dashboard/vaccinations>

Outbreaks

There are currently **4** outbreaks in congregate living settings. **3** of these outbreaks are in a long-term care facility and **1** in RC detention center.

To view NC Outbreaks and Clusters, visit:
<https://covid19.ncdhhs.gov/dashboard/outbreaks-and-clusters>